

20

**15<sup>TH</sup> YEAR**  
ANNIVERSARY  
2010-2025

# IMPACT REPORT

**CONNECT**  
**EMPOWER**  
**INSPIRE**

 **PALMETTO  
CARE  
CONNECTIONS™**

# BOARD OF DIRECTORS



**Julie Allen**  
Chief Financial Officer  
Hampton Regional Medical Center  
and Coastal Plains Physician Offices



**Nate Henderson, MD**  
Chief Medical Officer  
BlueCross and  
BlueShield of SC



**Ann Lewis, MHA**  
Chief Executive Officer  
CareSouth Carolina, Inc.



**John Magill**  
Retired State Director  
SC Department of  
Mental Health

## LETTER FROM OUR CEO

*At Palmetto Care Connections, our work begins with connection—connecting people, providers, technology, and communities across South Carolina. These connections are the foundation of everything we do, and they are what make meaningful progress possible. This year, we embraced a guiding theme that reflects both our mission and our momentum: Connect. Empower. Inspire.*

*In 2025, those connections translated into real, measurable impact. Through expanded telehealth services, broadband coordination, technology support, and digital literacy training, PCC continued to strengthen how care is delivered and accessed across the state. We connected healthcare organizations with the infrastructure and tools they need. We empowered providers and communities with practical, sustainable solutions. And we inspired innovation by ensuring technology works for people—wherever they are.*

*Our team worked alongside partners across sectors to implement strategies that are responsive to real-world needs. From rural health systems to community-based organizations, we focused on closing gaps, increasing access, and building systems that are stronger and more resilient. Each milestone reached this year reflects our shared commitment to improving health outcomes and expanding opportunity through collaboration and forward-thinking solutions.*

*Beyond the numbers, this year reflects the power of partnership. Strong collaborations, dedicated staff, engaged stakeholders, and supportive board leadership allowed us to move this work forward with clarity and purpose. Together, we supported healthcare organizations, empowered individuals with knowledge and tools, and reinforced the systems that communities rely on every day.*

*As we reflect on 15 years of service, the outcomes and stories shared in this report remind us why this work matters. They inspire us to build on our momentum—deepening connections, expanding our reach, and continuing to deliver results that matter across South Carolina.*

*Looking ahead, we see a future where innovation and equity move hand in hand—where digital access is universal, care is seamlessly connected, and communities are equipped to thrive in an increasingly technology-driven world. PCC will continue to lead with vision, strengthen partnerships, and explore new frontiers that redefine what is possible in healthcare access and delivery.*

*Thank you to our staff, board members, partners, and supporters for your continued commitment. Your support makes this work possible. Together, we will continue to connect, empower, and inspire—shaping not only what comes next, but what is possible for generations to come.*



*Kathy*

**Kathy Schwarting, MHA**  
Chief Executive Officer  
Palmetto Care Connections  
Co-Chair, South Carolina Telehealth Alliance



# BOARD OF DIRECTORS



**Danette McAlhaney, MD**  
**Chair**  
Family Practitioner, Owner  
Bamberg Family Practice



**James McElligott, MD, MSCR**  
Executive Medical Director  
MUSC Center for Telehealth  
Co-Chair, South Carolina Telehealth Alliance



**Meera Narasimhan, MD, DLFAPA**  
**Treasurer**  
Professor and Chair  
Dept. of Neuropsychiatry &  
Behavioral Science, Senior Medical  
Director, Behavioral Health, Prisma  
Health (Midlands) and Special Advisor  
to USC President, Healthcare  
Innovations, University of South Carolina



**Rich Rogers**  
**Vice Chair**  
Senior Vice President &  
Chief Information Officer  
Prisma Health



**Christian Soura**  
**Secretary**  
Vice President of Corporate  
Financial Operations  
McLeod Health

## THANK YOU



*Palmetto Care Connections thanks Rich Rogers for nine years of service on our Board of Directors. His leadership, including service on the Executive Committee, helped guide PCC's work and strengthen our impact across South Carolina.*





## VISION

*Every South Carolinian is connected to healthcare services.*



## MISSION

*To improve access to healthcare services in rural and underserved communities in South Carolina through telehealth, technology, broadband, and education.*



## VALUES

- *Build trusted relationships*
- *Empower communities*
- *Innovative solutions*
- *Keep healthcare local*
- *Increase access to care*
- *Advocate*



## FOCUS AREAS



Technology



Telehealth



Broadband



Education

# 2025 IMPACT AT A GLANCE



**30**

Telehealth  
Access Points



**69%**

Both A1C and/or  
Blood Pressure  
Improved



**2,035**

Patients Monitored on  
Telehealth Platform



**70%**

Remote Patient Monitoring  
Patient Compliance  
(MyHealthConnectSC)



**275**

Telehealth Summit  
Registrants



**81,234**

Malicious Attacks  
Prevented by  
Managed IT Services



**\$76,825**

Value of  
Digital Devices  
Distributed



**19**

In-Person  
Digital Literacy  
Trainings



**439**

Digital Literacy  
Graduates



**11**

States in the  
Consortium



**\$24.8M**

Broadband Savings  
Nationally



**\$12.8M**

Broadband Savings  
in South Carolina

# ADVOCATING FOR RURAL HEALTH



In 2025, Palmetto Care Connections engaged with federal and state leaders to elevate rural healthcare priorities, strengthen support for telehealth and connectivity, and ensure that policies reflect the needs of the communities we serve. Through direct engagement, PCC helps shape conversations that impact access, technology, and care delivery across South Carolina and beyond.



National Rural Health Association Policy Summit



Medicaid Roundtable



SC Department of Education Medicaid Coordinators' Meeting



Through continued collaboration with policymakers, PCC advocates for policies that strengthen telehealth infrastructure and remove barriers to care in rural communities. Our efforts focus on ensuring that distance, transportation, and provider shortages do not prevent individuals from receiving the care they need. PCC remains committed to advancing telehealth solutions that improve health outcomes and increase access for all South Carolinians.

# BUILDING TRUSTED RELATIONSHIPS



## SOUTH CAROLINA TELEHEALTH ALLIANCE 5 STRATEGIC AIMS

-  **01 SERVICE EXTENSION**
-  **02 HOSPITAL SUPPORT**
-  **03 CONVENIENT CARE**
-  **04 PRIMARY CARE SUPPORT**
-  **05 HEALTH EQUITY**

*The South Carolina Telehealth Alliance (SCTA) is a statewide collaboration of many organizations leading the way to expand telehealth services in South Carolina. The SCTA Advisory Council is co-chaired by Kathy Schwarting, CEO, Palmetto Care Connections, and James McElligott, MD, MSCR, Executive Medical Director, Center for Telehealth, Medical University of South Carolina.*

*In 2025, Palmetto Care Connections continued to strengthen its collaboration with the South Carolina Telehealth Alliance, reinforcing our shared commitment to expanding access to healthcare across the state.*

*Through this partnership, we leveraged innovative telehealth solutions to reduce barriers to care for individuals statewide. By aligning resources, expertise, and technology infrastructure, Palmetto Care Connections and SCTA worked together to enhance care coordination, improve specialty access, and streamline service delivery for patients.*

# INNOVATIVE SOLUTIONS

When LaTrell Mendoza received a call from the school nurse, she learned her son's hand was swollen and bruised and needed medical attention and X-rays.

Like many working parents, Mendoza began preparing to leave work and arrange a doctor's visit. Instead, thanks to the district's school-based telehealth program, Kingston was able to connect with a healthcare provider before ever leaving school.

From a private room on campus, trained school staff helped Kingston connect virtually with a provider at Bamberg Family Practice using telehealth equipment supported by Palmetto Care Connections. The provider was able to assess his injury and order X-rays within minutes.

By the time Kingston left campus, a plan for care was already in place. "I was thinking about all the steps we'd skip – checking in, waiting, triage, the exam room wait," Mendoza said. "Sign me up." After the telehealth visit, Mendoza and her son went directly to the doctor's office for imaging and follow-up care. Kingston received treatment with minimal disruption to the school day.



## SCHOOL-BASED TELEHEALTH PROGRAM IMPACT BAMBERG COUNTY



**186**

School-Based  
Telehealth Visits



**145**

Clinical Hours  
of Support



**7**

Educational  
Institutions

School-based telehealth expands access to timely, high-quality care for students by bringing healthcare services directly into the school setting. Through secure virtual visits with medical and behavioral health providers, students can receive assessments, treatment, and follow-up care without leaving campus, reducing barriers such as transportation challenges, missed class time, and caregiver work absences. This model supports earlier intervention for acute and chronic conditions, improves management of behavioral health needs, and helps keep students healthy, present, and ready to learn. By partnering with schools, telehealth programs also strengthen connections between families, educators, and healthcare providers, contributing to improved health outcomes and a more supportive learning environment for all students.



Partnership with Bamberg Family Practice



Partnership with Voorhees University

# KEEPING HEALTHCARE LOCAL

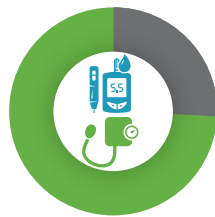
Palmetto Care Connections provides comprehensive remote patient monitoring (RPM), delivering real-time clinical oversight, personalized education, and proactive outreach to ensure patients remain engaged, supported, and on track with their care plans. RPM allows patients to receive care in the comfort of their own home, helps reduce unnecessary in-person visits, and supports better ongoing management of chronic conditions such as diabetes and hypertension.

## REMOTE PATIENT MONITORING PROGRAM IMPACT WITHIN 12 MONTHS



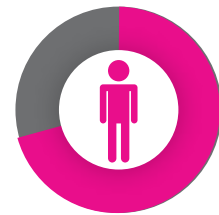
**138**

*RPM Patients  
Monitored by PCC*



**69%**

*A1C and/or  
Blood Pressure  
Improved*



**70%**

*Average Patient  
Compliance Rate*



A Clemson Rural Health patient began Remote Patient Monitoring (RPM) with an A1C of 14% and little confidence in her ability to manage her diabetes. Through consistent check-ins, personalized support, and real-time education, she gradually gained control of her condition—and renewed confidence in herself. Within just three months, her A1C dropped to 7%, a remarkable improvement that significantly reduced her health risks and improved her quality of life.

“RPM has been especially impactful for patients who otherwise might fall through the cracks due to distance, transportation barriers, or limited access to frequent in-person care.”



**Yolanda Green, MSN, RN**  
Remote Patient Monitoring Care Coordinator  
Clemson Health Clinic - Orangeburg  
Clemson Rural Health  
College of Behavioral, Social, and Health Sciences  
Clemson University

# INCREASING ACCESS TO CARE

Established through multiple COVID-19 grants, Palmetto Care Connections' telehealth platform provides healthcare providers with a single, integrated system to conduct a wide range of virtual services and consultations to improve workflows and care coordination.

## TELEHEALTH PLATFORM GROWTH



**9**

Health Care  
Providers



**1,035**

Patients



**3,717**

Telehealth Visits



## Telehealth Services

- Diabetes Prevention
- Nutrition Counseling
- Cooking Classes
- Diabetes Management
- Remote Patient Monitoring
- Pregnancy Support
- Congestive Heart Failure
- High Risk Pregnancy Support
- Postpartum Care Support
- Hypertension Support
- Behavioral Health
- Chronic Kidney Disease Outcome Improvement Program

# POWERING SECURE, RELIABLE CARE

Palmetto Care Connections provides managed IT solutions to health care providers serving rural communities. We care for the technology so health care providers can focus on care for the patient.



## 24/7 ADVANCED PERFORMANCE MONITORING

Extra support without extra staffing  
**511** Managed IT Service Workstations



## SECURITY AND BACKUP MAINTENANCE

Monthly Onsite Visits  
**6,840** Critical/Security Patches Automatically Installed



## PROACTIVE PREVENTIVE MAINTENANCE

Quick Response Time from Actual Person  
**12,876** Malicious Threats Prevented



## INCREASED PRODUCTIVITY

Tailored to Health Care  
**81,234** Cyber Threats Blocked



## WHAT OUR CUSTOMERS ARE SAYING

“

*Palmetto Care Connections has been a valuable partner for our organization. They manage all of our IT services and have helped us save both time and money through increased efficiencies and broadband discounts. Their team truly cares about improving healthcare through technology.*

Mike D.

”

“

*Contracting with PCC for our IT services continues to be an excellent choice for our organization. Matt is great to work with. Always professional, responsive, and forward-thinking about our IT needs.*

Lari G.

”

“

*PCC has been a great choice for our nonprofit agency to have access to top-notch Managed IT Services while staying within our budget. Trustworthy expertise and prompt response to problems make PCC second to none.*

Mara J.

”

# STRENGTHENING INFRASTRUCTURE

Palmetto Care Connections supports broadband connectivity in all 46 counties of South Carolina. As the lead organization for the South Carolina Health Care Broadband Consortium (also known as PSPN), Palmetto Care Connections helps eligible healthcare organizations secure affordable, reliable broadband through the FCC's Healthcare Connect Fund Program – strengthening connections between care sites and patients while reducing operating costs statewide and beyond.



**3,721**  
Total Funded  
Circuits



**759**  
Participating  
Organizations



**100%**  
Retention  
Rate



**100%**  
Satisfaction  
Rate

## TYPE OF ORGANIZATIONS SERVED

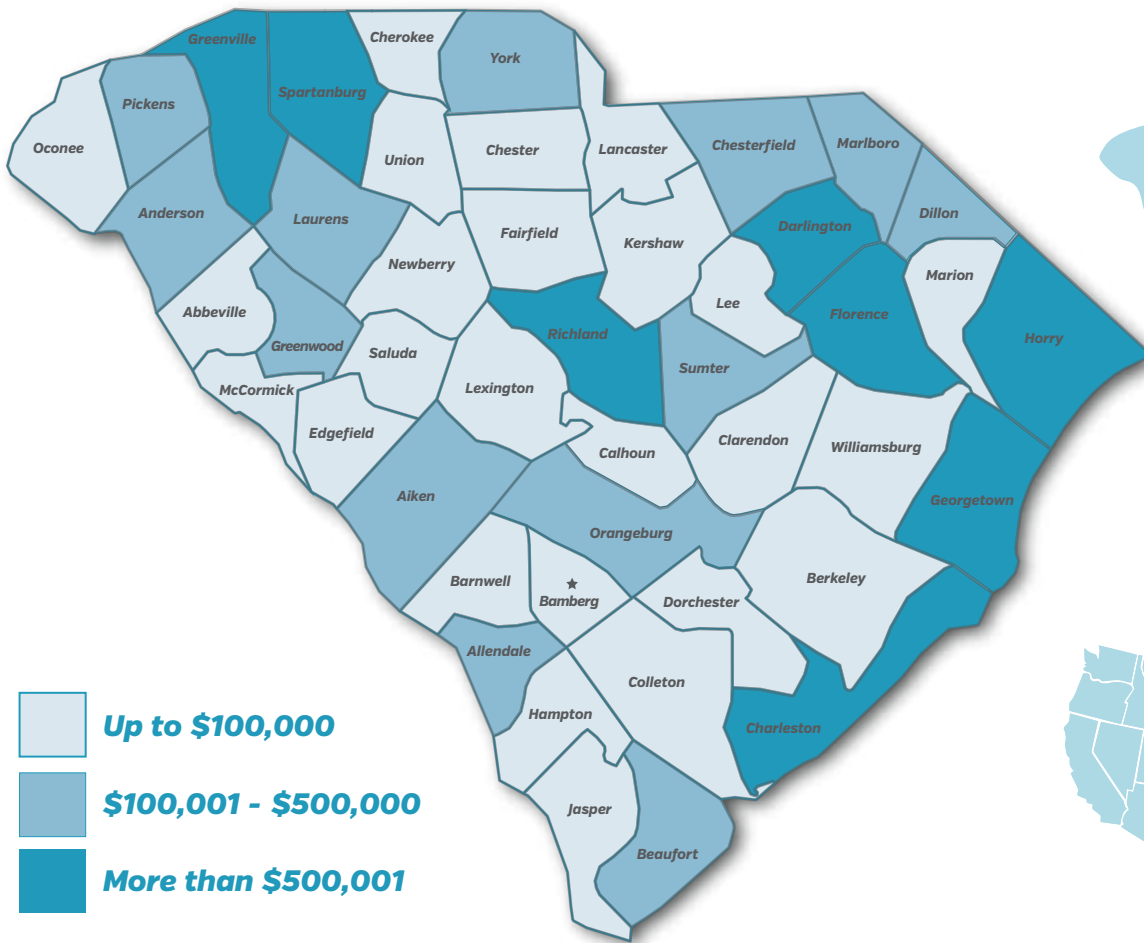
- Community Health Center or FQHC
- Community Mental Health Center
- Dedicated ER of Rural, For-Profit Hospital
- Local Health Department or Agency
- Post-Secondary Educational Institution Offering Health Care Instruction, Teaching Hospital or Medical School
- Rural Health Clinic
- Skilled Nursing Facility

# EXPANDING BROADBAND ACCESS

# \$84.9million

South Carolina broadband savings since 2013

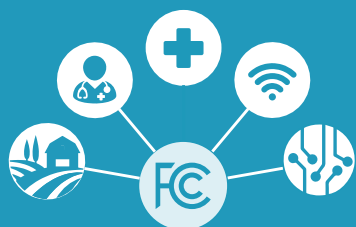
## STATEWIDE IMPACT ACROSS 46 COUNTIES



2025 Statewide Savings \$12.8M



2025 National Savings \$24.8M



Largest Federal Communications Commission funded Broadband Consortium in the country

# CONFIDENCE THROUGH CONNECTION

Palmetto Connect, PCC's Digital Literacy Program, was launched in 2021 during the COVID-19 pandemic in response to the rapid expansion of technology in everyday life—from healthcare and education to employment, banking, shopping, and social connection. The program was created to help South Carolinians build the digital skills needed to fully participate in an increasingly connected world. Since its launch, more than **3,000 South Carolinians** have received digital skills training, **over 50 in-person classes** have been hosted across the state, **6 online modules** have been released, and a **mobile app** has been developed to expand access to online learning resources.



## PALMETTO CONNECT 2025 PROGRAM IMPACT



### DIGITAL LITERACY TRAINING

**19** in-person classes at multiple community partner sites



### DIGITAL DEVICES

**439** tablets/laptops distributed with a value of **\$76,825**



### AFFORDABLE INTERNET SOLUTIONS

**12** months of free cellular service included on every device valued at **\$79,020**



### ONLINE CONTENT

**1** Mobile App  
**6** Online Modules

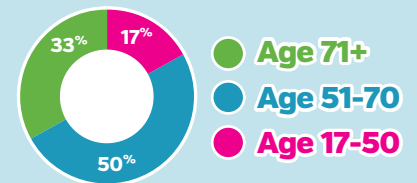


### TECHNICAL SUPPORT

**1,059** Hours of training and technical support

## PROGRAM REPORT SINCE 2021

### Age Breakdown



**2,237**

Digital Literacy  
Graduates and  
Devices Distributed



**46**

Counties Served



**1,034**

Corporate Graduates



**3,483**

Hours of Training  
and Technical  
Support

# REACHING LEARNERS AT HOME

At 70 years old, Mr. Olin Barnett is finally pursuing a dream he has carried for decades—earning his GED. Through a digital literacy training supported by the South Carolina Department of Health and Human Services (SCDHHS), Olin received a tablet that allows him to access classes and learning resources online. Years ago, he shared this goal with his wife, hoping that one day he would have the opportunity to make it happen. Today, that opportunity is here. With the help of technology and digital access, Olin is turning a lifelong goal into reality.

In partnership with the South Carolina Department of Health and Human Services, Palmetto Care Connections expanded access to digital health education by launching online training modules for medically homebound individuals. By increasing health literacy and building confidence in using telehealth, this initiative helps participants better manage their care and reduce avoidable hospital visits.



## PROGRAM GOALS



### INCREASE HEALTH LITERACY

In partnership with the **South Carolina Telehealth Alliance**, Palmetto Care Connections (PCC) works alongside healthcare providers statewide to improve health literacy, expand telehealth utilization, promote patient portal engagement, and strengthen connectivity access



### INCREASE CONNECTIVITY

In collaboration with **Spectrum/Charter Communications**, PCC supports digital confidence and expands connectivity access in two rural South Carolina counties, helping bridge the digital divide.



### REDUCE HOSPITAL READMISSIONS

With funding from the **South Carolina Department of Health and Human Services**, PCC delivers digital and health literacy education to South Carolina Medicaid recipients at higher risk of hospitalization. Through personalized training, education, and the provision of digital devices, patients are empowered to better manage their health and improve outcomes.



### INCREASE ACCESS TO CARE

Partnering with **Family Solutions**, a program of the South Carolina Office of Rural Health, PCC provides digital literacy training to pregnant women, with a focus on strengthening health literacy and increasing telehealth engagement

## SCDHHS DIGITAL LITERACY PILOT PROJECT



**6**

Participants  
Trained  
In Person



**88**

Individuals Reported  
Transportation Barriers



**447**

Individuals Accessed the  
Training Completely  
from Home



**4,470**

Hours of  
Online Learning

Through online learning opportunities, Palmetto Care Connections is helping remove barriers that prevent many South Carolinians from accessing digital skills training. For individuals who are medically homebound or face transportation challenges, virtual modules provide a convenient and accessible way to build confidence using technology. Participants can learn at their own pace while gaining essential skills to navigate telehealth services, access online resources, and stay connected to their communities.

# SUPPORTING LEARNER SUCCESS

Digital literacy training builds confidence, expands access to care, and helps individuals use technology as a tool for better health and everyday life.



## TOP 3 LEARNER GOALS

Each participant is interviewed before the training to assess their goals. Participants want to:

1. Safely use the internet and identify scams
2. Communicate with healthcare providers via telehealth
3. Learn more about health literacy



## WHAT THEY LEARN

1. Device Basics
2. How to Create and Use Email
3. How to Use Telehealth and Communicate Online
4. Health Literacy
5. Internet/Technology Safety
6. Zoom to Connect with Family and Friends



## LEARNER SATISFACTION



**97%**  
Training  
Satisfaction  
Rate



## WHAT OUR LEARNERS ARE SAYING

“Being in this class has been life-changing. For PCC to come to Dillon County means more than words can say. It made me want to help others get the access they need to become more advanced technologically.”

Arra Ford  
Dillon County

“The class has taught me not only how to do a telehealth visit but also how to do a Zoom meeting. Now, I feel more comfortable doing a telehealth visit.”

Nicole Washington Dixon  
Eutawville, SC

“This training has helped me navigate how to get in contact with my doctors and schedule a visit, not only with my primary doctor but also with my specialists.”

Tammy Arnold  
Lexington County

# CONNECTING COMMUNITIES TO TELEHEALTH

For Pastor Yates and the congregation at Franklin United Methodist Church, bringing a telehealth cart into their new community outreach center was about one simple thing: access. In rural Denmark, transportation can be a challenge. For many residents, visiting a doctor – or even the VA Hospital – means finding a ride, taking off work, and traveling outside the county. The telehealth cart changes that, allowing families to connect with providers close to home without the burden of travel.



Pastor Yates shared, “It means they have access to quality healthcare, and they can actually choose the provider that they need at that time.” For a church rooted in service, that access reflects a deeper mission: “We want people to be healthy – financially, physically, spiritually, emotionally, and educationally.”



**30**

*Telehealth  
Access Points*



**3**

*New Sites  
Added in 2025*



**8**

*Dedicated  
Telehealth Providers*



**51**

*Telepresenters  
Trained*

## TELEHEALTH ACCESS POINTS



*Senior Center*



*Library*



*School*

With funding support from a Rural Health Network Development Grant, Palmetto Care Connections (PCC) successfully established 30 telehealth access points across diverse community settings, including libraries, schools, senior centers, and churches. By integrating telehealth services into trusted and familiar community spaces, PCC enhances accessibility and fosters a comfortable, supportive environment for individuals to connect with care providers.

# 13TH ANNUAL TELEHEALTH SUMMIT OF SC



## BRINGING LEADERS TOGETHER TO ADVANCE CONNECTED CARE

PCC's 13th Annual Telehealth Summit of South Carolina brought healthcare leaders, policymakers, educators, and innovators to Charleston to share best practices, strengthen collaboration, and advance the future of connected care across the state.



**275**

Telehealth Summit Registrants



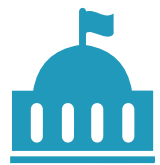
**29**

Telehealth Summit Sponsors



**60**

State and National Speakers



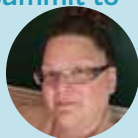
**8**

Legislative Speakers



This was my first time attending the South Carolina Telehealth Summit, and it has been an amazing experience. I've made fantastic connections, learned more about telehealth in South Carolina, and gained valuable insight into school-based telehealth, FQHCs, and rural health centers. I absolutely plan to be back next year and would recommend this Summit to anyone involved in telehealth.

Stephanie Payne, MBA, LSSGB  
Dept. of Emergency Medicine,  
Emory University School of Medicine



The Summit sparks creativity and gives us space to focus on new ways to better serve our communities. It allows us to showcase what community health centers do and learn about new advancements in telehealth. For our rural health centers, access is critical—and this Summit helps us connect our health centers and the people they serve.

Kenya Mingo, MBA, MA, CLSSGB  
SC Primary Health Care Association





# 2025 TELEHEALTH WINNERS



## National Telehealth Champion

*The Honorable  
Lindsey Graham  
United States Senator*



## State Telehealth Champion

*The Honorable  
Henry McMaster  
South Carolina Governor*

Pictured L to R: Kathy Schwarting, MHA, Danette McAlhaney, MD, Ann Lewis, MHA, Governor Henry McMaster, Meera Narasimhan, MD, DLFAPA, and James McElligott, MD, MSCR



## State Telehealth Legislative Champion

*The Honorable  
Mark Smith  
South Carolina State Representative*

Pictured L to R: Kathy Schwarting, MHA, Danette McAlhaney, MD, Ann Lewis, MHA, Representative, Mark Smith, Meera Narasimhan, MD, DLFAPA, and James McElligott, MD, MSCR



## Rick Foster Primary Care Telehealth Champions

*Timothy Hensley MD, MPS, FAAP  
C. Stuart Simko, MD  
Prisma Health*

Pictured L to R: Kathy Schwarting, MHA, Danette McAlhaney, MD, Ann Lewis, MHA, Timothy Hensley, MD, MPS, FAAP, C. Stuart Simko, MD, Meera Narasimhan, MD, DLFAPA, and James McElligott, MD, MSCR



## Telehealth Innovator

*Lauren Johnson, MSN, APRN, FNP-BC  
McLeod Health*

Pictured L to R: Kathy Schwarting, MHA, Danette McAlhaney, MD, Ann Lewis, MHA, Lauren Johnson, MSN, APRN, FNP-BC, Meera Narasimhan, MD, DLFAPA, and James McElligott, MD, MSCR



## Telehealth Trailblazer

*Kaitlin Hughes, BS, RMA  
CareSouth Carolina, Inc.*

Pictured L to R: Kathy Schwarting, MHA, Danette McAlhaney, MD, Ann Lewis, MHA, Kaitlin Hughes, BS, RMA, Meera Narasimhan, MD, DLFAPA, and James McElligott, MD, MSCR



## Telehealth Pioneer

*Presented in Memory of  
Michael Haschker*

Pictured L to R: Kathy Schwarting, MHA, Danette McAlhaney, MD, Ann Lewis, MHA, Mrs. Andrea Haschker, Meera Narasimhan, MD, DLFAPA, and James McElligott, MD, MSCR



## Telehealth Program of Excellence

*MUSC Health  
Department of Emergency  
Medicine's Telehealth Division*

Pictured L to R: Kathy Schwarting, MHA, Danette McAlhaney, MD, Ann Lewis, MHA, Jeanhyong Park, MD, FACEP, Marc Bartman, MD, Meera Narasimhan, MD, DLFAPA, and James McElligott, MD, MSCR

## POSTER AWARDS



## Scientific Poster

*From Wait to Wellness:  
How MUSC Telehealth  
is Reshaping Emergency  
Department Care*

Pictured L to R: Kathy Schwarting, MHA, Danette McAlhaney, MD, Ann Lewis, MHA, Katie Kirchoff, MSHI, Shay McLeod, MSN, RN, Meera Narasimhan, MD, DLFAPA, and James McElligott, MD, MSCR



## Programmatic and Voter's Choice

*The Trinity of Correctional  
Telehealth: Primary, Specialty,  
and Urgent Care MUSC Health*

Pictured L to R:  
Sheila Roxanne Riser, PA-C, MPASa,  
Amanda S. James, MSHI, RN, BSNa, and  
Ryan R. Lau, MS, R.EEG/EP T.,  
CNIM, CLTM, FASETAB

# 13th Annual Telehealth Summit of SC Sponsors



## Diamond Sponsor

SOUTH CAROLINA  
**Telehealth**  
ALLIANCE

## Platinum Sponsors

**McLeod Health**  
The Choice for Medical Excellence

**MUSC Health**  
Medical University of South Carolina

**PRISMA**  
HEALTH SM

SOUTH CAROLINA DEPARTMENT OF HEALTH AND HUMAN SERVICES  
**Healthy Connections**  
MEDICAID

**BHDD** SOUTH CAROLINA  
DEPARTMENT OF BEHAVIORAL HEALTH  
AND DEVELOPMENTAL DISABILITIES  
OFFICE of MENTAL HEALTH

## Gold Sponsors

**South Carolina**  
BlueCross BlueShield of South Carolina  
is an independent licensee of the  
Blue Cross Blue Shield Association.

**SEGRA**

*Your Health*

## Silver Sponsors

**FirstChoice**  
by Select Health of South Carolina  
FAMILY OF HEALTH PLANS

**Spartanburg Regional  
Healthcare System**

**Spectrum**  
BUSINESS

**VirtuAlly**

## Bronze Sponsors

**ALLIANCE FOR A HEALTHIER  
SOUTH CAROLINA**

**MOLINA**  
HEALTHCARE

**SOUTH CAROLINA  
PRIMARY HEALTH CARE  
ASSOCIATION**

**amwell**

**South Carolina  
AHEC**  
Area Health Education Consortium

**sc Thrive**

**HillSouth**  
IT solutions.

**amplify life**  
SCEDP | South Carolina Equipment  
Distribution Program

**SOUTHEASTERN  
telehealth**  
RESOURCE CENTER

**manatt**

**UNIVERSITY OF  
South Carolina**  
School of Medicine

## Networking Reception Sponsors

**healthmap**

**Carium**  
A Healthmap Solutions Company

**IRON BOW**  
HEALTHCARE  
SOLUTIONS

**tenovi**

## Break Sponsor

**SCHA**  
SC HOSPITAL ASSOCIATION

# EDUCATION, TRAINING & AWARENESS

## WEBINAR WEDNESDAY



**38** Registrants

Feb 26, 2025

School-Based Telehealth: Impact on Student Health Outcomes

Partnered with LRMC

**21** Registrants

April 30, 2025

Leveraging Telehealth to Support Employment and Retention in Recovery Friendly Workplaces

Partnered with SC Office of Rural Health

## ONLINE RESOURCES & PCC MOBILE APP



### National Telehealth Awareness Week

- PCC participated in Telehealth Awareness Week to highlight telehealth benefits for patients, providers, and communities
- Supported conversations around access, education, and virtual care

### Online Resources & PCC Mobile App

- Updated digital resource guides for all 46 counties in South Carolina
- Launched the PCC mobile app to provide easier access to:
  - o Digital literacy tools
  - o Telehealth and health education resources

# STAYING CONNECTED

PCC participated in key conferences and professional forums to stay current on telehealth, digital access, and connected care—bringing insights back to support partners and programs across South Carolina.



*Palmetto Care Connections celebrated 15 years of advancing connected care across South Carolina – a milestone that underscores sustained impact and long-standing relationships with partners and communities.*

*We also celebrated major staff milestones: Ramona Midkiff, Multimedia Designer, marked 5 years; Matt Hiatt, Chief Technology Officer, celebrated 10 years; and our Chief Executive Officer Kathy Schwarting reached 15 years of leadership and service.*

# 15 YEARS OF IMPACT







*Digital Literacy Classes  
Expand Access in Mullins*



*Digital Literacy Training Reaches  
Orangeburg Co. Residents*



*Kingstree Residents Build Digital  
Skills Through PCC Training*



*Telehealth Access Points  
Expand Care Options*



*Charleston Summit Tackles Rural  
Telehealth Challenges*

*Health Experts Urge Awareness  
of Seasonal Depression*



*Telehealth Expands Access  
to Specialty Care in Rural  
South Carolina*

*Legislative Panel  
Addresses Rural Health  
Funding and Telehealth Policy*

# GOOD TIMES



# AWESOME TEAM





1880 Main Highway | Bamberg, SC 29003  
803.245.2672 | [www.palmettocareconnections.org](http://www.palmettocareconnections.org)

