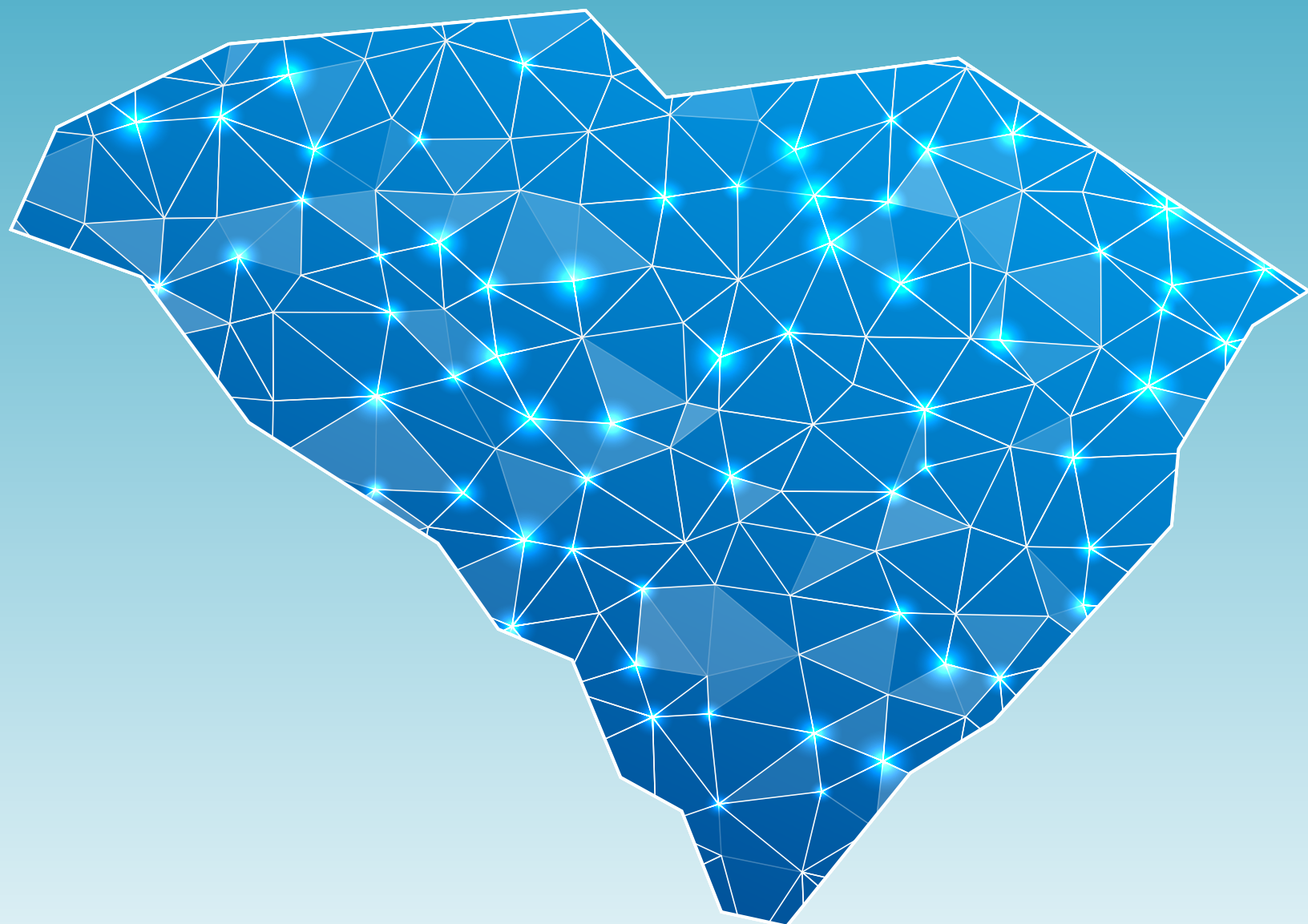


2021 annualreport

Acceleration Access + Adoption

THE EVOLUTION OF TELEHEALTH AND BROADBAND





1880 Main Highway | Bamberg, SC 29003
803.245.2672 | www.palmettocareconnections.org



2021
annualreport



table of contents

03	Vision, Mission and Focus Areas
04	Letter from CEO
05	SC Community Star Award
07	Outstanding Health Network Award
09	Acceleration, Access & Adoption
11	SC Broadband Consortium
13	Digital Inclusion
17	SC Virtual Access Telehealth Network
19	Collaboration and Partnerships
21	Telehealth Summit of South Carolina
23	Education, Advocacy & Awareness

vision

To increase access to quality health care for rural and underserved South Carolinians through technology, broadband and telehealth.

mission

To assist providers in keeping health care local and connecting rural and underserved South Carolinians to quality services through technology, broadband and telehealth.

focus areas



technology

Supporting the effective and efficient use of innovations in technology



broadband

Improving coverage, affordability and quality of broadband service



telehealth

Advancing the adoption of telehealth for increasing access to quality care





Graham Adams, PhD
Chairman
 Chief Executive Officer
 SC Office of Rural Health



Rick Foster, MD
Vice Chairman
 Physician Advisor
 SC Department of Health
 and Human Services
 Help Me Grow SC



Will Harms, MD, MBA
 Vice President
 Medical Affairs
 BlueCross and BlueShield of SC



Ann Lewis, MHA
 Chief Executive Officer
 CareSouth Carolina



John H. Magill
 Retired State Director
 SC Department of Mental Health



Danette McAlhaney, MD
 Family Practitioner, Owner
 Bamberg Family Practice



James McElligott, MD, MSCR
Secretary
 Executive Medical Director
 Center for Telehealth
 Medical University of South Carolina
 Co-Chair, South Carolina Telehealth Alliance



Meera Narasimhan, MD, DFAPA
Treasurer
 Professor and Chair, Department of Neuropsychiatry
 and Behavioral Science, Senior Medical Director
 Behavioral Health Prisma Health (Midlands) and
 Special Advisor to UofSC President
 Health Care Innovations and Economic Development
 University of South Carolina



Rich Rogers
 Senior Vice President
 Chief Information Officer
 Prisma Health

board of directors

letter from chief executive officer

PCC was founded in 2010 for the purpose of increasing access to health care services through the use of telehealth in rural and underserved communities in South Carolina. We quickly realized that we could not expand telehealth without expanding access to broadband. Broadband isn't just necessary for telehealth adoption but it has become known as the super-social determinant of health as it has a direct impact on all of the other social determinants of health. The pandemic has forced us to acknowledge that very simply stated...access to affordable internet service will forever be tied to the quality of life a person lives.

The worldwide pandemic has taught us all many valuable lessons. One important lesson for the PCC team is that even with the presence of COVID 19, there are always emerging opportunities on the horizon for technological innovations. The pandemic served as the catalyst that opened our eyes to evident digital and health inequities not only in South Carolina but across the globe. The rural and underserved communities that we serve experienced many of these inequities first-hand. This allowed us the opportunity to develop and implement a Digital Inclusion Program called Palmetto Connect. Our first efforts allowed our team to teach digital literacy skills to include how to conduct a telehealth visit to senior citizens in five rural and/or underserved communities in the state and to provide them with a digital device and free internet services. I can honestly say that this opportunity to impact the lives of some of our most beloved citizens has been one of the most rewarding experiences of my twenty-five-year career in rural health. This is the only the beginning of this chapter as we plan to expand this program to every community in South Carolina.

In 2021, as PCC continued to focus on acceleration, access and adoption of telehealth, technology and broadband, we realized that we had finally reached a major milestone – we now have a presence in all 46 counties in South Carolina as is evident in this Annual Report. This accomplishment was made possible through the many relationships we have established with our partners and collaborators not only in South Carolina but nationally. In 2021, we also gratefully accepted the Outstanding Network of the Year Award from the National Cooperative of Health Networks. This recognition was made possible through the dedication and hard work of each member of the PCC team as well as each member of our Board of Directors. What an honor to be recognized for doing what we love and feel so passionate about.

It is my pleasure to present this 2021 Annual Report as it represents more success that we could have ever imagined when we started PCC over a decade ago. It represents hard work, dedication, commitment, relationships, partnerships, collaborations and a deep love and passion for rural and the wonderful work we are blessed to engage in every day. Enjoy!

Kathy Schwarting

Kathy Schwarting, MHA
 Chief Executive Officer
 Palmetto Care Connections

Kathy Schwarting

SC Community Star Award

"Success has nothing to do with what you gain in life or accomplish for yourself. It's what you do for others." These words from the late actor Danny Thomas apply perfectly to Kathy Schwarting, CEO of Palmetto Care Connections (PCC), a 501(c)(3) she founded in 2010. The long list of her accomplishments, big heart, innovative ideas, and what her nominator describes as "tireless energy and advocacy" are a few reasons she is a bright star!

Raised in a community of about 700 people with no healthcare provider in sight and the closest emergency room 30 minutes away, Kathy knew that she wanted to help rural communities gain better access to healthcare services in her beloved home state.

Her health career started in 1995 during her Master of Health Administration residency at a South Carolina rural hospital. For the next 16 years, Kathy worked in management positions between two rural hospitals in contiguous counties and created the first rural health network in the state, laying the foundation for promoting shared services between four rural hospitals. With Kathy in charge, the network grew to the point of sustainability—until two of the participating hospitals closed. Kathy understood that this turn of events had far-reaching consequences. So rather than be driven away, she changed lanes, immersed herself in learning, aligned with others, and accelerated telehealth in rural South Carolina.

PCC is growing and thriving under Kathy's leadership. As South Carolina's broadband consortium leader, PCC helped save members over \$25 million through the Federal Communication Commission's (FCC) Healthcare Connect Fund program since 2013. Additionally, PCC recently received a \$17 million commitment from the FCC for broadband funding to benefit not-for-profit hospitals and health clinics, FQHCs, skilled nursing facilities, and other consortium members.

In 2020, Kathy assisted the state's Department of Education in identifying households that needed government-issued hotspots to participate in virtual learning and provided telehealth technical assistance to 38 schools in seven counties.

With all Kathy has done in her career to serve others, you'd think she'd be ready to slow down. But, she's not because she resolves to "continue working across South Carolina to assist rural communities in obtaining better healthcare services."

**Reprinted from the 2021 Community Stars publication of the National Organization of State Offices of Rural Health. [PowerofRural.org](https://www.powerofrural.org)*

Alliance for a Healthier South Carolina Leadership Team

Carolinas Preparedness Task Force

Center for Telehealth and eHealth Law (CTeL) Advisory Board

Co-Chair, South Carolina Telehealth Alliance

National Cooperative of Health Networks Association Member


Secretary, Lowcountry AHEC Board of Directors

Vice Chair, South Carolina Health Information Exchange (SCHIE)

SC Behavioral Health Coalition Core Leadership Team Policy and Advocacy Committee



Leadership Roles

A full-page background image of a rural landscape at sunset. In the foreground, a large, round hay bale sits on a grassy field. In the middle ground, two more hay bales are visible. The background features a line of trees under a sky with vibrant orange, pink, and purple hues from the setting sun.

“Early on, Palmetto Care Connections recognized the intersection between broadband access and health care access. Our rural communities need both to thrive, and Palmetto Care Connections has led the way in making sure our state works towards greater equity in those areas.”



Graham Adams, PhD
Chairman

*Chief Executive Officer
SC Office of Rural Health*



Outstanding Health Network of the Year

PCC was awarded the National Cooperative of Health Networks Association's (NCHN) 2021 Outstanding Health Network Award.

The NCHN Outstanding Health Network of the Year Award recognizes any network or entire network organization that has improved access to health services in its service area and coordination of resources for network members through innovative, comprehensive approaches.

"Palmetto Care Connections was established in 2010 to improve access to care in rural and underserved communities by infusing health care services through telehealth technologies. This was important because of increasing difficulties in recruiting providers of rural areas and the financial challenges facing many small hospitals. Over the years, Palmetto Care Connections has grown into a statewide telehealth network and the resulting scope of activities has continued to expand. The leader of the South Carolina broadband consortium, Palmetto Care Connections assists health care providers in receiving broadband savings through the Federal Communication Commission's Healthcare Connect Fund program. Since 2013, they have helped providers save more than \$25 million in broadband costs. The network received a \$17 million FCC commitment to fund broadband for its consortium members over the next three years. These funds represent actual savings for health care providers," said Linda Weiss, NCHN Executive Director.

"What an honor it is for PCC to be named the Outstanding Health Network of the Year, especially considering all the amazing networks across the country who are as equally passionate about their work as we are. I am proud to say this accomplishment was made possible because of our PCC team of professionals who are hardworking, dedicated and compassionate about the work we do. We, as a team, are very lucky that we get to do what we love for our beloved communities in this crazy, fast-paced life on a daily basis. We are fortunate to also be part of another great network – NCHN! Thanks for your confidence in PCC."



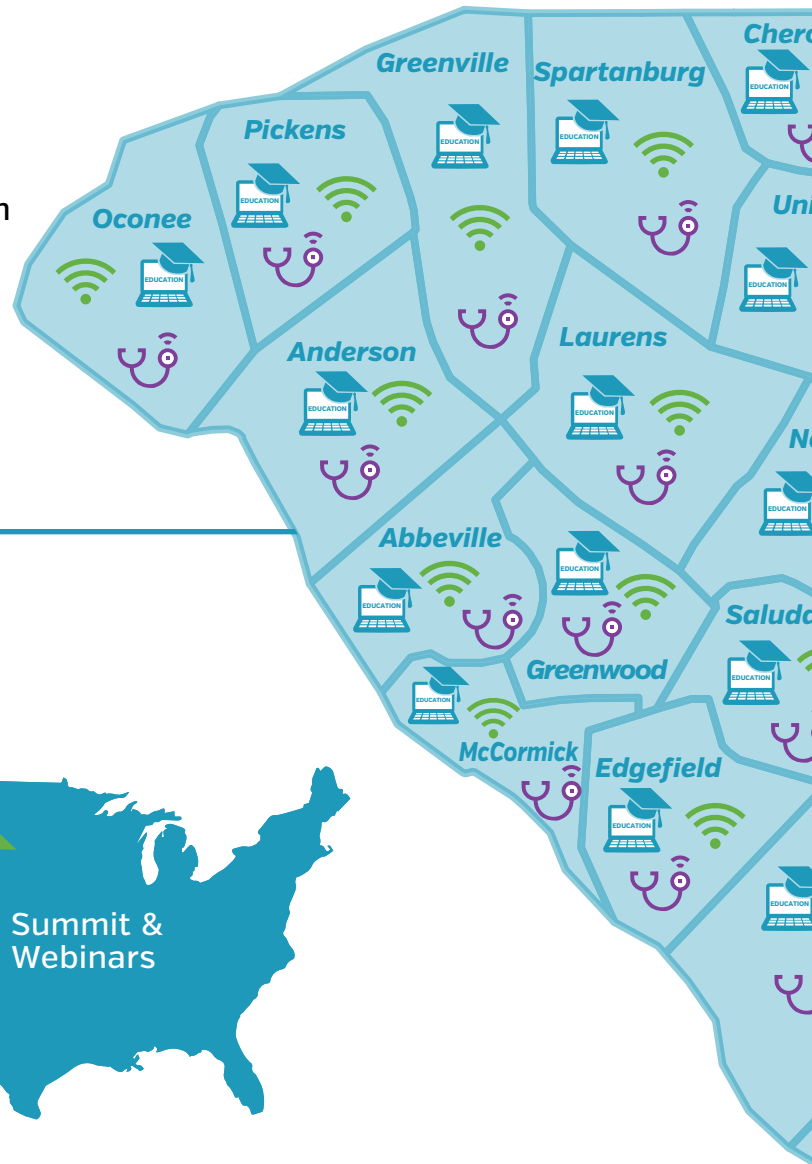
Kathy Schwarting, MHA
Chief Executive Officer
Palmetto Care Connections



acceleration access

While the terms quarantine and isolation have been in the spotlight for more than two years, Palmetto Care Connections and partners have been discussing digital equity and inclusion to improve access that is needed for telehealth, virtual learning, remote working and more. In 2021, PCC's role in accelerating the adoption of telehealth technologies and digital inclusion reached all **46 counties in South Carolina**, 27 states and 3 countries.

Alabama	Missouri
Arizona	Nebraska
Arkansas	New Hampshire
California	New Jersey
Colorado	New York
Connecticut	North Carolina
Florida	Ohio
Georgia	Pennsylvania
Illinois	Tennessee
Indiana	Texas
Maryland	Utah
Massachusetts	Virginia
Michigan	Wisconsin
Minnesota	Puerto Rico

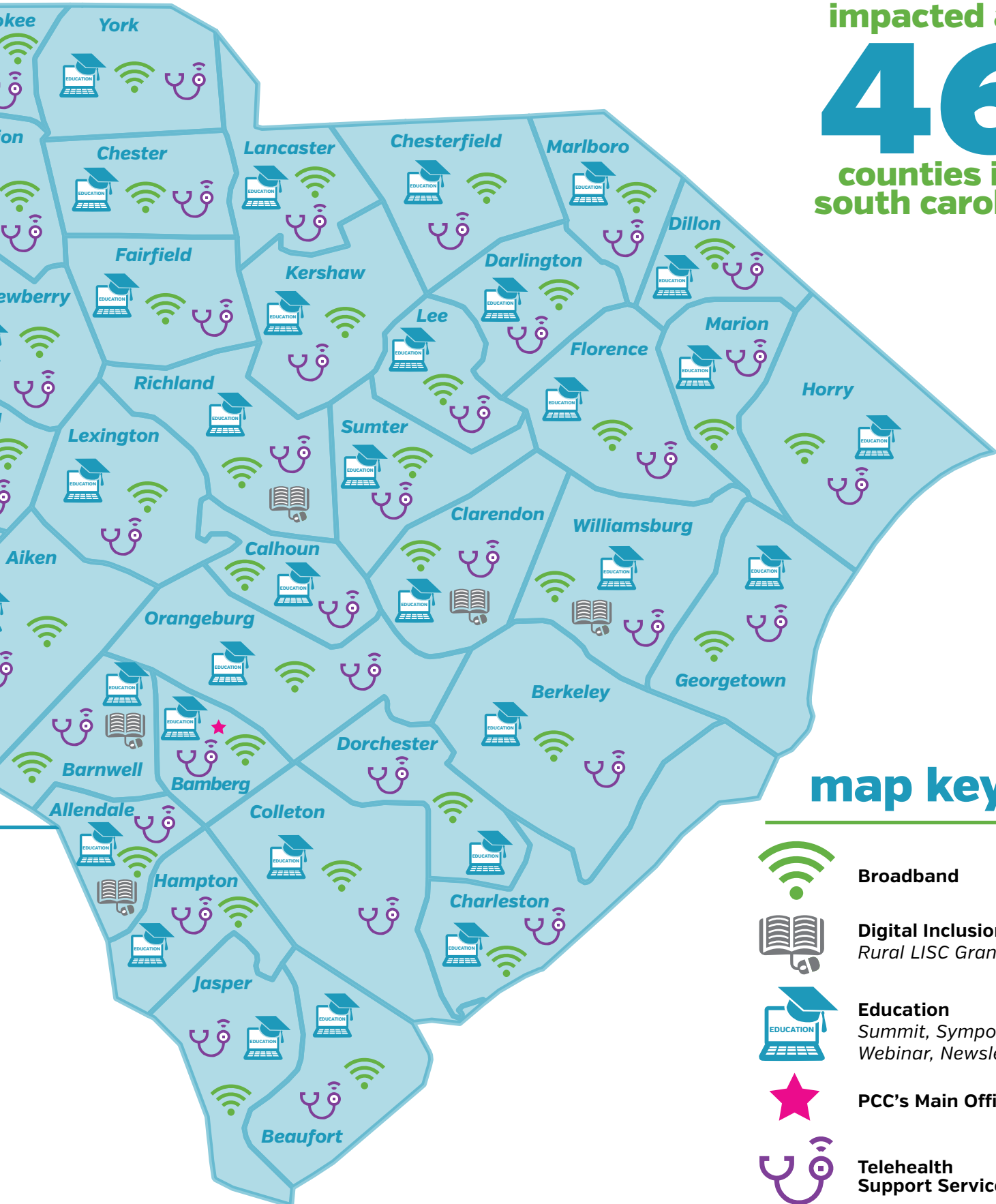


Ukraine
Sweden
Bangladesh



& adoption

impacted all
46
counties in
south carolina



sc broadband consortium

As the leader of the South Carolina Broadband Consortium, PCC helps health care providers receive broadband savings through the FCC's Healthcare Connect Fund Program by assisting them with the internet service provider bidding process and filing the appropriate information, invoices and supporting documentation to the Universal Service Administration Company (USAC).

broa

Eligible Organizations:



Behavioral Health Centers



Non Profit Hospitals



Federally Qualified Health Centers



Rural Health Centers



Skilled Nursing Facilities



Free Clinics



Correctional Facilities



Teaching Hospitals



\$30million
in broadband savings since 2013

1500
total#offundedcircuits

broadband

300
newcircuitsfundedin2021

"Solvent Networks, a division of SCHA, has entered into new partnerships with Palmetto Care Connections. Through these partnerships, we've been able to meet member and community needs for broadband access and savings. PCC continues to be a strong, effective, knowledgeable, and collaborative partner."



Lara Hewitt

Vice President

Workforce & Partner Engagement
Solvent Networks

603
total#offundedsites

141
newsitesfundedin2021

digital inclusion

Palmetto Care Connections' **Palmetto Connect Digital Inclusion Solutions** help close the digital divide for residents in rural and underserved areas of South Carolina by increasing internet access and affordability, and connecting individuals to quality of life resources which can combat social isolation, enhance knowledge and improve health. Palmetto Connect Digital Inclusion Solutions initiatives:

Digital Inclusion for Seniors

provides hands-on digital training, free computing devices and free or discounted cellular or internet services. Senior citizens learn skills such as how to send and receive photos and emails, search the

internet for information, connect with family and friends using a virtual face to face app, play games and connect with their doctor for virtual telehealth appointments. PCC provides ongoing technical support for the seniors who complete the program.

Similarly, the **Community Development Digital Inclusion** curriculums provide hands-on digital training to assist rural residents in developing digital life skills such as assisting school-aged loved ones with virtual education or searching and applying for jobs. Each tailored curriculum includes training about how to safely navigate the internet, emails and video conferencing, including zoom and telehealth.

Palmetto Connect's **Digital Refurbishment** initiative plans to utilize high school and technical college students to upgrade and refurbish used digital devices that can be redistributed to residents of rural and underserved communities who can benefit from the refurbished devices.



**\$450K CDC Health Equity Grant
to Expand Telehealth and
Improve Digital Literacy**



PCC, working with the SC Office of Rural Health, has received a \$450,000 Centers for Disease Control (CDC) Health Equity Grant to improve digital inclusion and support workplace health.

Through the program, at least 1,000 residents in at least seven rural counties will receive digital inclusion training, free digital devices, and 12 months of free cellular services.

PCC will collaborate with rural libraries, schools, Offices on Aging and other local partners to increase access to health care. A portion of the funding will help establish on-site telehealth services in rural small businesses and industries. The goals of the program are to increase access to health care, reduce absenteeism, save health insurance costs and improve overall health by implementing tailored telehealth programs based on employee needs.

Spectrum Awards \$35K Digital Education Grant to PCC



Palmetto Care Connections received a \$35,000 Spectrum Digital Education grant for Palmetto Connect as part of Spectrum's five-year, \$7 million commitment to digital education in Spectrum communities across the country. PCC will train seniors in 5 rural counties.

"We applaud Palmetto Care Connections for their broadband education initiatives and for helping us support efforts that promote digital literacy in rural South Carolina counties," said Rahman Khan, Vice President of Community Impact for Charter Communications, Inc., which operates the Spectrum brand of broadband connectivity products. "Through this partnership with Palmetto Care Connections, the Spectrum Digital Education program is able to bring essential resources to those in need, and we look forward to working with them on this transformative project."

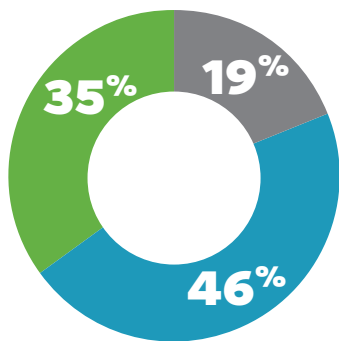
Left to right: Spectrum Senior Director of Government Affairs, Ben Braezeale; Bamberg County Councilwoman Sharon Hammond; Bamberg County Council Chairman Larry Haynes; Palmetto Care Connections (PCC) CEO Kathy Schwarting; PCC Chief of Technology Matt Hiatt; PCC Director of Digital Literacy Programs Diane Washington; Bamberg Mayor Nancy Foster; Olar Town Administrator Bert O'Rear.



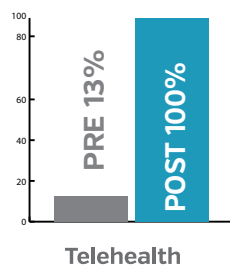
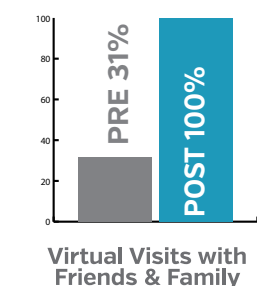
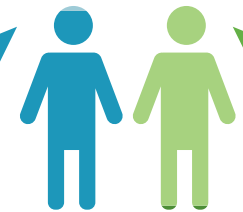
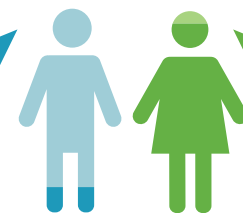
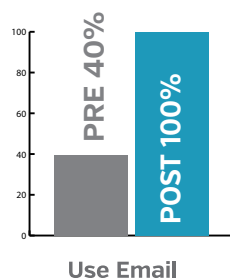
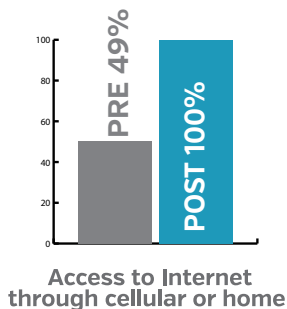
PCC Partners with Rural LISC, SC Arts Commission and SC Department on Aging

Palmetto Care Connections received a \$19,500 Rural Local Initiatives Support Corporation (LISC) grant and an additional \$25,000 from the SC Department on Aging to implement a digital inclusion program for seniors in rural areas or underserved communities in Allendale, Barnwell, Clarendon, Richland and Williamsburg counties.

The Rural LISC grant and SC Department on Aging funds helped 100 seniors who live in rural communities, aged 60 and older, with digital literacy training, a free digital device and free cellular services for 12 months. Participants learned skills like how to take and send photos, send and receive emails, safely navigate the internet, use video conferencing and connect with their health care providers for telehealth visits. Additionally, some participants received training about Community Arts resources available through the SC Arts Commission such as art, quilting, poetry and other creative activities.



● Age 80+
 ● Age 70-79
 ● Age 60-69



"This class is awesome! I have learned how to email, take photos, search the internet and I'm in the process of learning how to get telehealth appointments with my doctor on this tablet—I'm looking forward to that."



Hattie Blackwell
 Clarendon County Participant

digital inclusion



**allendale
county**



**barnwell
county**

"I enjoyed the class, liked the people, and could follow instructions they gave. I learned about sending and receiving emails, which is something I didn't know. It makes me feel real good. When I was growing up, I didn't have any of this. Before this class, I didn't know how to turn a computer on! I plan to do my banking online, play solitaire and keep in touch with my kids."



Leslie Dowling

Barnwell County Participant



**clarendon
county**



**richland
county**

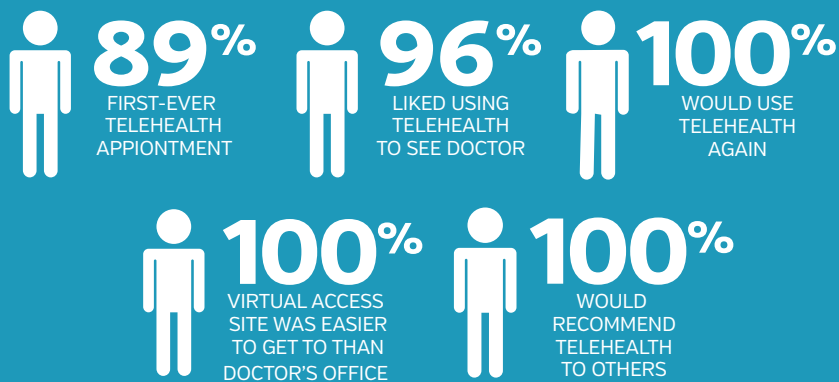


**williamsburg
county**

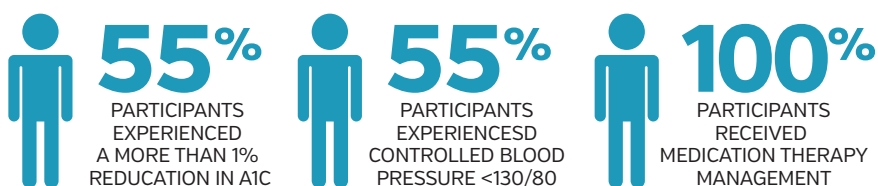
sc virtual access

Through a three-year, \$300,000 per year, Federal Health Resources and Services Administration (HRSA) Rural Health Network Development grant, the South Carolina Virtual Access Telehealth Network (SC VATN) is developing telehealth access sites and expanding telehealth services in rural areas.

TELEHEALTH PATIENT SATISFACTION SURVEY RESULTS FOR 2021:



An area of focus for the SC VATN in Year 1 has been **chronic disease management** targeting pharmacy patients who have diabetes or pre-diabetes, coordinated through **Chronic Disease Self-Management Education** and **Medication Therapy Management** activities provided through rural, independent pharmacy staff.



"Telehealth is easy to use for both the patient and me, and the sessions have gone very well. It is especially nice to see each other and interact in person on the telehealth computer screens, even though we're miles apart. I think it makes the patient feel more comfortable than just a telephone conversation."

Chelsea Hilliard, LMSW
Bamberg County Mental Health

telehealth network

Community Engagement



PCC staff members conducted blood pressure screenings and promoted telehealth at the 2021 Ehrhardt Pharmacy Holiday Open House. Pictured (L to R) Owner and Pharmacist Donna Avant and Jimmy Clayton with PCC Staff Kathy Rhoad and Breanna Parham.

PCC offers telehealth support services such as equipment installation and trainings. Telehealth equipment was installed at Lane Town Hall in Williamsburg County. PCC Telehealth Coordinator Breanna Parham conducted telehealth training for Lane Town Hall staff members as part of the telehealth equipment installation.



collaboration and

Palmetto Care Connections Awarded

\$782K

In FCC COVID-19 Telehealth Funds

PCC serves as a leading partner and administrator for the South Carolina Rural Telehealth Initiative, a consortium of diverse health care providers that will deploy a telehealth platform and remote patient monitoring devices to enhance remote care of patients with COVID-19, remote care for select chronic disease patients with high risk of mortality from acquiring COVID-19 and telehealth capabilities for COVID-19 and other admitted patients to critical access hospitals

Partners:

Allendale County Hospital
Alpha Behavioral Health Center, Chesterfield County
Clemson Health Clinic, Walhalla
Clyburn Center for Primary Care of Rural Health
Services, Inc., Aiken
Little River Medical Center
Lowry's Primary Care, Chester
Williamsburg Regional Hospital

The SC Rural Telehealth Initiative will be co-led by PCC CEO Kathy Schwarting, MHA and Clemson Rural Health Director Ron Gimbel, PhD.

"Remote patient monitoring often requires medical devices to capture biomedical readings. The devices, such as weight scale, blood pressure monitor, glucose monitor, pulse oximeter will be integrated within our telehealth platform and provide trended data for comparison. The devices will make it possible for some vulnerable/high-risk patients to isolate at home and receive care remotely," said Gimbel. "Within our critical access hospitals, the devices will be used within the hospital facilities to ensure high quality care despite of nursing shortages and other challenges."



Ron Gimbel, PhD

Director
Clemson Rural Health

partnerships

SCTA Support Strategies:

The South Carolina Telehealth Alliance (SCTA) is a statewide collaboration of many organizations joining forces to expand telehealth services across the state. The SCTA Advisory Council is co-chaired by James McElligott, MD, MSCR, of the Medical University of South Carolina and Kathy Schwarting, MHA, of Palmetto Care Connections.

1 Service Extension

Objective: All citizens of South Carolina will have equitable access to ambulatory care. Telehealth modalities will be used in the ambulatory setting to extend the reach of services that would otherwise be limited by travel and related barriers to care.

2 Support Hospitals

Objective: Every community hospital in our state will have access to telehealth partnerships that enhance its services and its finances. These *Hospital Services* represent partnerships that extend care between hospitals using telehealth with a focus of connecting resources from larger urban hospitals to community hospitals throughout the state.

3 Convenient Care

Objective: All citizens in South Carolina will have affordable and immediately available patient-initiated virtual urgent and other health system-entry level care from an in-state provider. *Convenient Care* services are designed to engage individual patients through their own available devices in order to optimize utilization and maximize healthcare engagement.

4 Support Primary Care

Objective: All primary care clinics in the state, with emphasis on Health Professional Shortage Areas (HPSAs), will have access to integrated services through telehealth partnerships. These services are intended to support the mission of the primary care clinic as a medical home, emphasizing the importance of local health care infrastructure while mitigating gaps in access to supporting resources.

5 Healthy Equity

Objective: Targeted, novel initiatives will close the gap in access to health care services for high-priority health disparities. *Health Equity* services will progress towards achieving health equity across the state in specifically identified areas of health disparity.

*Information from SC Telehealth Alliance at SCTelehealth.org.

“Palmetto Care Connections has and continues to be a core partner for the South Carolina Telehealth Alliance. Tirelessly assisting rural sites with access to telehealth services has been steadfast of PCC, and now they have accepted the challenge of improving digital literacy and enabling patients to connect to care directly from their homes. PCC continues to be an essential component of the Alliance while representing the rural needs of our state.”



James McElligott, MD, MSCR

*Executive Medical Director, Center for Telehealth
Medical University of South Carolina
Co-Chair, South Carolina Telehealth Alliance*

9th annual telehealth

Palmetto Care Connections hosted its Virtual 9th Annual Telehealth Summit of SC on November 9-10, 2021. Traditionally an in-person event, the Annual Summit unites health care leaders across the state of South Carolina. The virtual platform allowed PCC to share telehealth policy and program updates to participants beyond state borders.



sponsors

Blue Cross Blue Shield of SC
SC Telehealth Alliance
Clemson Rural Health
SC Department of Mental Health
SC Department of Health and Human Services
McLeod Health
MUSC
Prisma Health
USC School of Medicine

1,523

PCC Website
Page Views

39,602

Virtual Event
Total Page Views

5,793

Video Views

357

Summit
Participants

466

Documents
Downloaded

456

Messages sent for
Virtual Networking

summit of south carolina

telehealth awards winners



National Telehealth Champion
United States Senator Tim Scott



State Telehealth Champions
Cady Williams, MD and Kent Jones, MD
(Ferlauto Center for
Complex Pediatric Care)
Pictured with Davia Smith (PCC)



Telehealth Program of Excellence
Southeast Viral Interactive
Case Conference
Divya Ahuja, MD (UofSC SOM)
Pictured with Davia Smith (PCC)



Telehealth Program of Excellence
Project ECHO Opioid Use Disorder
Rachel Grater and Karen Hartwell, MD (MUSC)
Pictured with Davia Smith (PCC)



Telehealth Innovator
The Navigation Center
Marie Roland and John Govan



Telehealth Pioneer
Michael Lyons, MD
(Greenwood Genetic Center)
Pictured with Davia Smith (PCC)



Scientific Poster Award
The Financial Performance
of Rural Hospitals
Jada Johnson, Dunc Williams,
and Mary Dooley (MUSC)
Pictured with Davia Smith (PCC)



Programmatic Poster Award
Telehealth Technologies, Data,
and Process Improvement to
Drive Innovation
Evelyn Terrell, Jason Stiles, Saima
Aftab, Elizabeth Sotolongo, Laura
Cerma and Fahd Lahrech



People's Choice Poster Award
Microsoft Teams for Clinical
Telehealth Collaborations
Rachel Grater, Laura Langston,
Ryan Lau, and Peter Gardella (MUSC)
Pictured with Davia Smith (PCC)

education, advocacy

In 2021, Palmetto Care Connections (PCC) shared technology, telehealth, and broadband updates across multiple platforms by connecting with partners around the state. PCC served as a voice for rural and underserved areas on a live television series, Palmetto Perspectives, produced by the South Carolina Educational Television (SCETV). PCC also made appearances on podcasts, webinars, conferences, roundtables, legislative meetings, radio, and more. The increased demand for virtual meetings and education has brought about a tremendous growth in PCC's social media audience, event attendees, and email and newsletter opens.

Since 2016, South Carolina has celebrated Telehealth Awareness Week (TAW) in the Fall led by SCTA. In 2021, Telehealth Awareness Week went national under the leadership of the American Telemedicine Association. PCC partnered with the South Carolina Telehealth Alliance to increase telehealth awareness among patients and health care providers. During TAW, PCC also partnered with the SC Department of Mental Health to highlight Telemental Health services in South Carolina in response to the national mental health crisis.

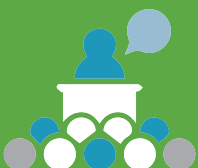


100

SYMPOSIUM
PARTICIPANTS

62.9

CEUs
AWARDED



**wednesday
webinar**

PRESENTED BY PALMETTO CARE CONNECTIONS

808

WEBINAR
PARTICIPANTS

1,200

WEBSITE VIEWS



1,849

EMAIL
CONTACTS

21,000

EMAIL OPENS



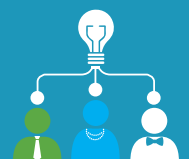
**TELEHEALTH
AWARENESS WEEK**
September 19-25, 2021

3,000

SOCIAL MEDIA
POSTS REACH

3

SOCIAL MEDIA
PLATFORMS



& awareness

1.3K
social media
audience



LinkedIn

↑ **36%**

increase in



engagements

facebook

↑ **87%**

increase in



fans

twitter

↑ **748%**

increase in



twitter clicks

Live TV, Podcasts, Webinars, Conferences and More



Palmetto Perspectives Show
produced by SCETV



Telehealth Heroes Podcast
produced by DoxyMe



Growing Rural Podcast
produced by the SC Center for
Rural and Primary Healthcare



A Discussion on Broadband
sponsored by Charter Communications



NORTHEASTERN
TECHNICAL COLLEGE

Broadband Roundtable Discussion
hosted by Spectrum and Northeastern
Technical College



GLOBAL PARTNERSHIP FOR
TeleHealth

**Georgia Partnership for
Telehealth Conference**



**SOUTH CAROLINA
PRIMARY HEALTH CARE
ASSOCIATION**

**SC Primary Health Care
Association State & Policy Forum**



Sow, Harvest, Reap the Benefits
hosted by Blue Cirrus Consulting